



MexiMar

America's Marine Highway
Ocean ~ Road ~ Intermodal Services



Intermodal Ocean Transportation

- Weekly ship service for dry, fresh and frozen unitized commodities between:
- Puerto de Tuxpan, Mexico
- Port Canaveral, Florida, USA
- Port of New Bedford, Massachusetts, USA



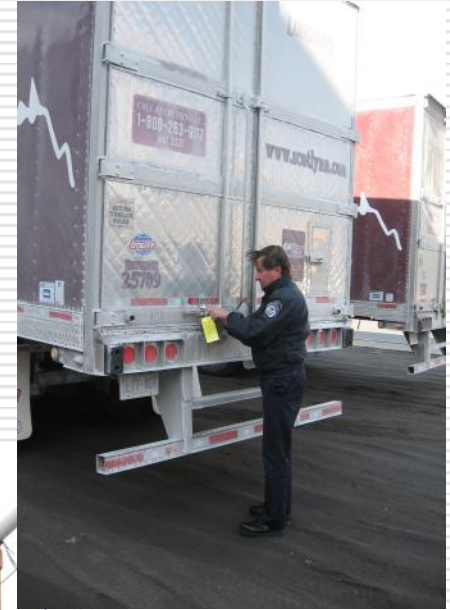
Frigotux - Juxpan



Port Canaveral - Florida



New Bedford - Massachusetts

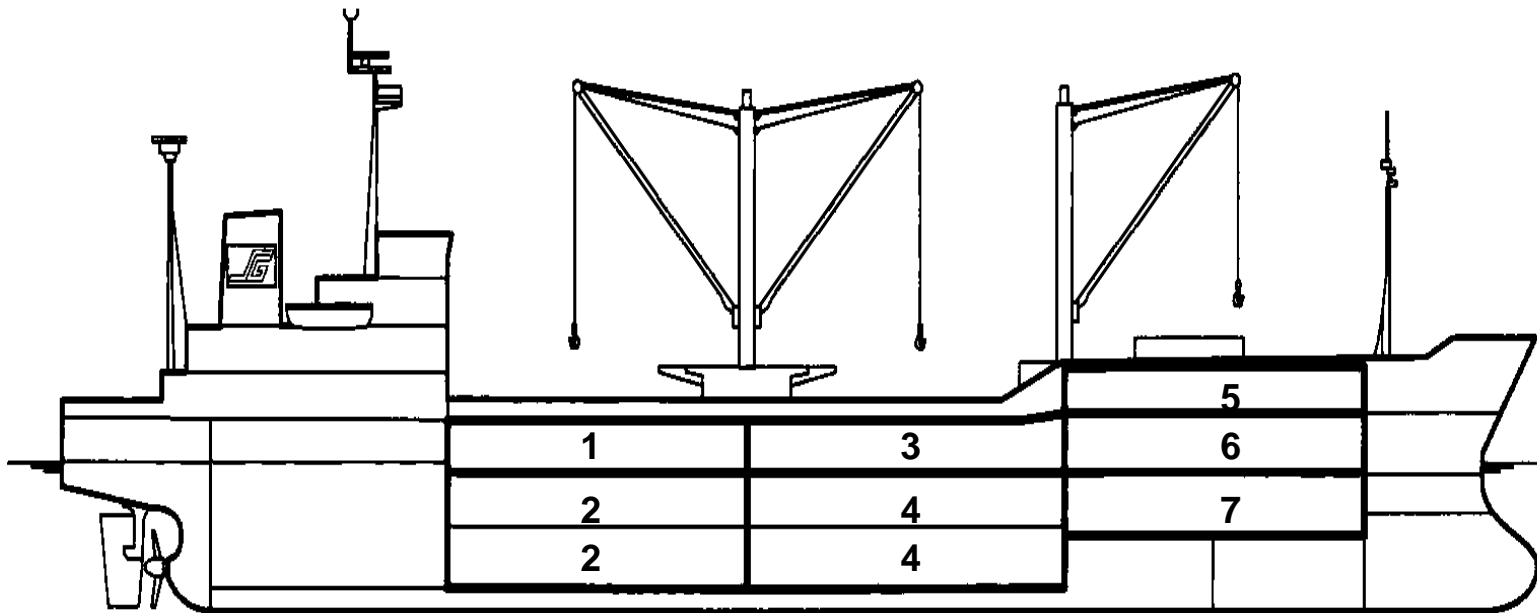


Benefits

- Economical Freight Rates**
 - Market Access to the Northeast and Southeast Atlantic, Midwest USA and Canadian markets**
 - Dockside cold storage facilities**
 - 5 Days Free Storage at Origin and Destination**
 - Eliminate Border Trans-loading**
 - Simplified U.S. Customs Clearing Process**
-

Cold Chain Integrity

REFRIGERATED VESSEL ~ Temperature Zones



Specially designed vessels featuring high cooling capacity, air circulation and accurate temperature control

Logistic Services



- ❑ Trucking, logistics services and full documentation handling services available
- ❑ Real-Time on-line inventory
- ❑ Pre-Cooling Services
- ❑ 360 Quality Control members ensuring the highest level of product care for your perishables
- ❑ *MexiMar Weekly Reliable Service*
Savings of up to 25% versus trucking

Weekly Reliable Schedule

| Week | Vessel | Voyage | Port of Tuxpan | Port Canaveral | New Bedford |
|------|----------------|---------|-----------------------|-----------------------|-----------------------|
| | | | <i>load/discharge</i> | <i>load/discharge</i> | <i>load/discharge</i> |
| 41 | Green Explorer | V.1102N | 10/16/2011 | 10/19/2011 | 10/23/2011 |
| 42 | Green Klipper | V.1103N | 10/23/2011 | 10/26/2011 | 10/30/2011 |
| 43 | Green Explorer | V.1104N | 10/30/2011 | 11/2/2011 | 11/6/2011 |
| 44 | Green Klipper | V.1105N | 11/6/2011 | 11/9/2011 | 11/13/2011 |
| 45 | Green Explorer | V.1106N | 11/13/2011 | 11/16/2011 | 11/20/2011 |
| 46 | Green Klipper | V.1107N | 11/20/2011 | 11/21/2011 | 11/27/2011 |
| | | | | | |

Note:

Schedules are subject to change, all dates are weather permitting / Itinerario sujeto a cambios sin previo aviso

Cut-off at port: 24 hours prior to vessel's arrival

Cargo must be received in export-ready condition and at booked temperature

Service operated by Hamburg Reefer Chartering



FIRST SAILING OCTOBER 2011

Hamburg Reefer's **MEXIMAR WEEKLY SERVICE**

