

# MMARAD

U.S. MARITIME ADMINISTRATION



## Update on the Marine Highway Initiative New England Trade Development Summit

Capt. Jeff Flumignan

North Atlantic Gateway  
1 Bowling Green, Suite 418 | New York | NY 10004  
[www.dot.gov](http://www.dot.gov)

- **MARAD mission**
- **Marine Highway**
- **Infrastructure Development**
- **National Export Initiative**

- **To improve and strengthen the U.S. marine transportation system -- including infrastructure, industry and labor -- to meet the economic and security needs of the Nation.**
- **MARAD is one of the 11 modal administrations within the U.S. Department of Transportation.**



## ■ Responsible for:

- Infrastructure Development & Congestion Mitigation
- Marine Highways & Passenger Services
- Deepwater Ports & Offshore Activities
- Shipper & Carrier Outreach
- Gateway Offices

# Marine Highway Initiative

# UPDATE

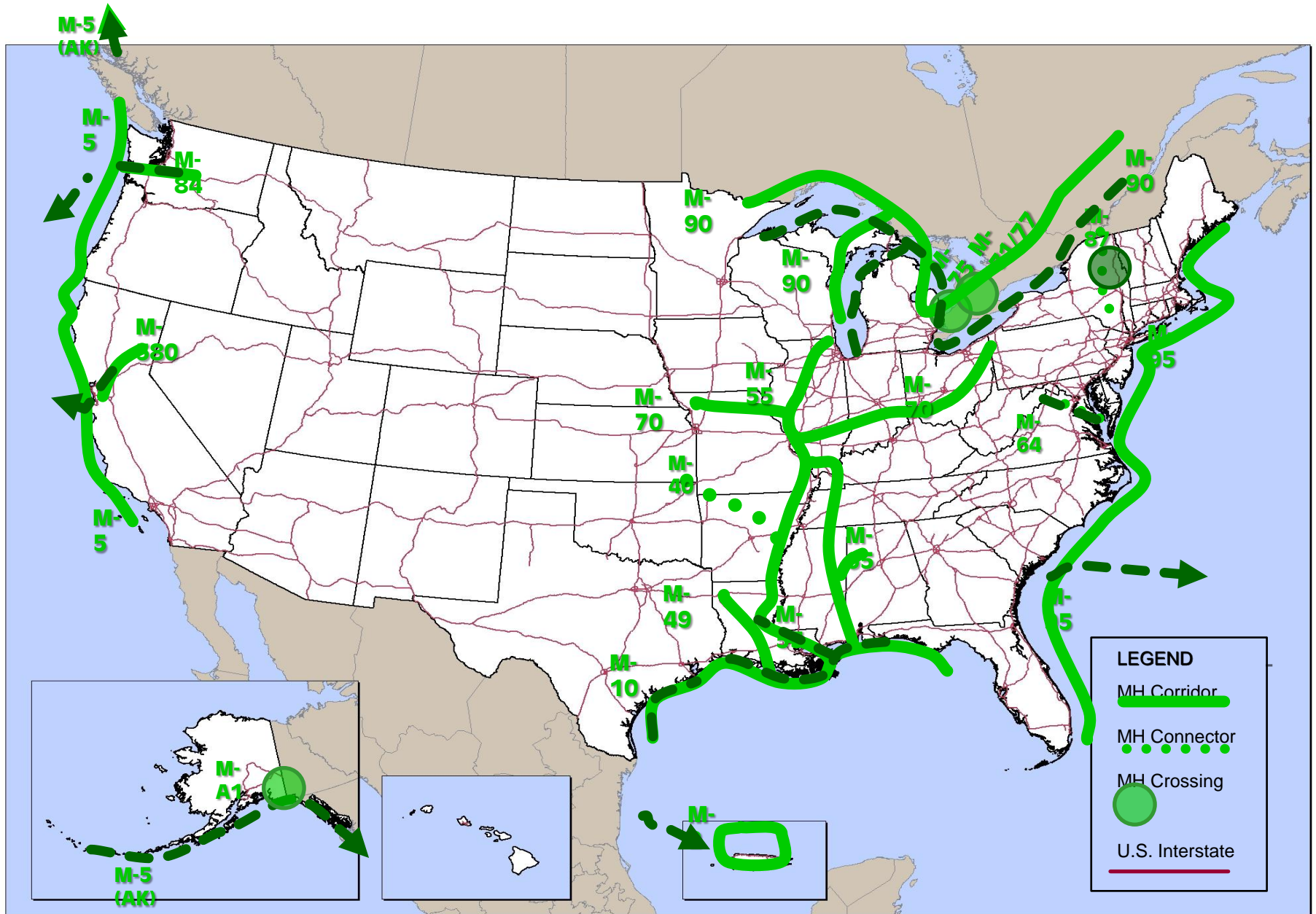
## ■ Current Situation

- Existing congestion is already a serious problem.
- International trade growth can only increase congestion.
- Existing landside infrastructure can't support the growth.
  - Roads and railroads are near capacity, are costly and take decades to expand.
- The U.S. moves about 2% of our domestic freight by water:
  - Europe - 44%
  - China - 61%

# America's Natural Marine Highway's



# Current Marine Highway Designations



## ■ Intermodal Marine Lines

- Long haul intermodal service Jacksonville, FL to Paulsboro, NJ

## ■ National Shipping of America

- M95 Express Marine Highway Service
  - Weekly roundtrips Chester, PA to Port Everglades, FL

## ■ American Feeder Lines

- New England-Halifax Shuttle
  - Feeder service from Halifax to Portland, ME & Boston, MA
- AFL is developing future US Flag feeder service

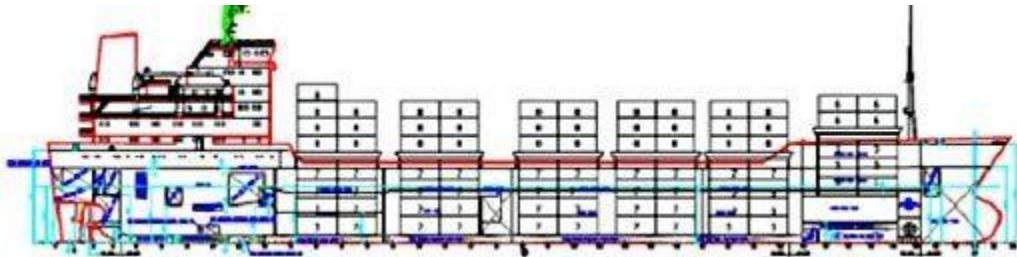


- New domestic Intermodal Marine Highway
- Service start: **2015** with 1st ship delivery
- Dual Fuel/Multi-modal/Hi-Capacity RoRo
- 285-53' Containers and/or Trailers and unitized cargoes
- **Jacksonville / Paulsboro** – 1st Developed Route – MOU with South Jersey Port Corporation
- Additional M95, M5 & M10 Long haul routes under development



**National Shipping of America will provide the first long-haul container ship service in the Maritime Administration's recently designated M-95 corridor.**

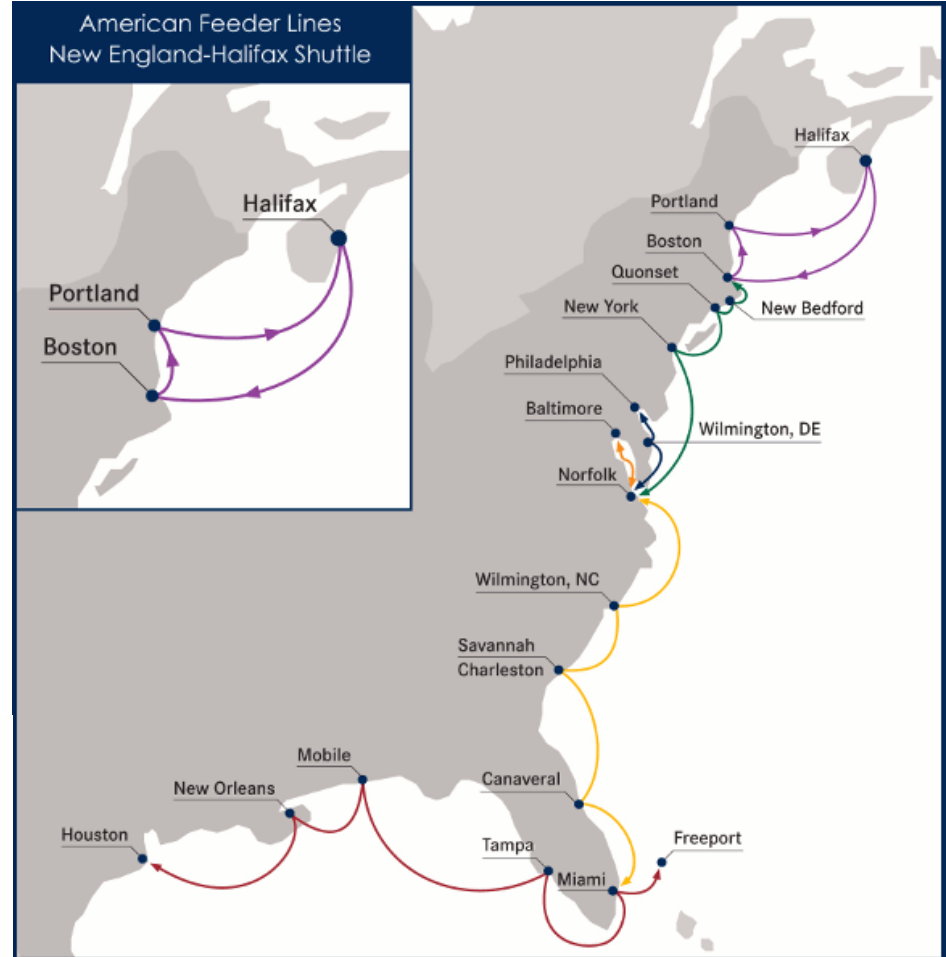
**The weekly roundtrip service will connect South Florida with the Northeast on a fixed day of the week basis, and provide congestion relief along the I-95 highway and parallel rail networks.**



**NSA will offer transshipment service for international carriers' containers while offering domestic customers the use of high cube 40'/45' dry containers and 40' High Cube refrigerated containers.**

**American Feeder Lines will build, own, and operate the first fully compliant Jones Act Short Sea container liner service in the United States.**

**AFL will build ships based on proven European designs and deploy its vessels into a fully integrated container Short Sea service.**



# Infrastructure Development

# UPDATE

- **Promote and facilitate a United States maritime transportation system that improves the safe and efficient movement of goods and people.**
  
- **Legislative Initiatives:**
  - Short Term
    - Federal Leadership for Port Infrastructure Development
    - General Lead Agency Authority for Port and Terminal Development was received as part of FY10 Appropriations
    - Authority for Port Development Financing Mechanisms
  - Long Term
    - Port Funding Line Item in DOT Budget
    - Authority to Undertake Research and Development

- **Infrastructure Development that supports the Marine Transportation System**
- **Short Term**
  - Priority Projects that Maximize System efficiency
  - “One-Stop Shop” for Infrastructure Projects
- **Long Term**
  - Implement National Port Strategy
  - Port Requirements as Part of Surface Transportation Reauthorization
- **Major Projects**
  - Port of Anchorage Intermodal Expansion Project
  - Port of Guam Improvement Enterprise Program
  - Philadelphia Regional Port Authority (PRPA) Marine Cargo Terminal Grant
  - Hawaii Harbors Infrastructure Expansion Program
  - Port Arthur, TX (dry dock)

- 26 Projects overall
- \$ 300 million

**TIGER =**  
**Transportation**  
**Investment**  
**Generating**  
**Economic**  
**Recovery**

- 3 Marine Highway Projects
- 5 studies
- 6 Tiger I Grants
- 6 Tiger II Grants
- 3 Port projects
- 3 ARRA projects



## ▪ 3 Marine Highway Projects

- Tenn-Tom Waterway Pilot
- James Rver Container Expansion
- Cross-Gulf Container Expansion

## ▪ 5 Studies

- M5 West Coast Marine Highway Studies
- M55 Inland Waterways Marine Highway Studies
- M95 Marine Highway Studies
- Supplemental Missouri River Study
- Panama Canal Trade Flow Study

## ▪ 6 Tiger I Grants

- California Green Trade Corridor
- Quonset Wind Energy And Surface Transportation
- Pier 29 Reconstruction Hawaii
- Revitalize Maine Ports
- Tri-City Illinois Intermodal Hub
- Auke Bay Loading Facility

## ▪ 6 Tiger II Grant

- Gulf Marine Highway Infrastructure Development
- SW Oregon Coos Bay Rail Line
- Port of LA West Basin Rail Access
- Port of Miami Rail Access
- Port of Providence Infrastructure
- Cates landing terminal

## ▪ 3 Port projects

- Hawaii Ports Infrastructure
- Guam Ports Infrastructure
- Anchorage Ports Infrastructure

## ▪ 3 ARRA projects

- Toledo Crane
- Portland, OR Terminal Upgrade
- Columbiana County Pier Expansion

## ■ Marine Highway Initiative

- M95 East Coast Marine Highway
- New Jersey Marine Platform
- Cross Sound Ferry
- Trans-Hudson Rail Barge
- New England Marine Highway Expansion
- Hudson River Food Corridor



■ **TIGER I:**

- Quonset Wind Energy/Surface Transportation
- Revitalize Maine Ports

■ **TIGER II:**

- Port of Providence Infrastructure

# National Export Initiative

# UPDATE

- **President Obama signed an Executive Order March 11, 2010 instructing the federal government to enhance and coordinate Federal efforts to promote exports.**
- **The President ordered the following measure to ensure high-level coordination of U.S. export promotion activities:**
  - Creating the Export Promotion Cabinet
  - Re-launching the President's Export Council (PEC)

**A plan to support and create American jobs**

**A critical new effort for long-term economic growth**

**A government-wide coordination to promote exports**

Double exports over the next five years to  
support two million  
**American** jobs

**NEI**

NATIONAL EXPORT INITIATIVE

[www.export.gov](http://www.export.gov)



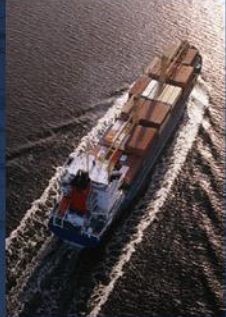
# The **National Export Initiative** will:



and drive the need for **transportation** services....

- As America focuses on the doubling of our nation's exports between 2009 and 2014 under President Obama's National Export Initiative (NEI), the **marine transportation system will provide capacity, infrastructure and export services** to support the movement of America's products.
- The federal agencies involved in oversight of the various aspects of the MTS must work together to quickly address transportation and logistics obstacles in order to **promote improved system access and efficiency**.

# Questions?



# MMARAD

U.S. MARITIME ADMINISTRATION

